

SPEED & PRECISION FOR LARGER PARTS



PRODWAYS
TECHNOLOGIES

ProMaker **L6000**

WWW.PRODWAYS.COM

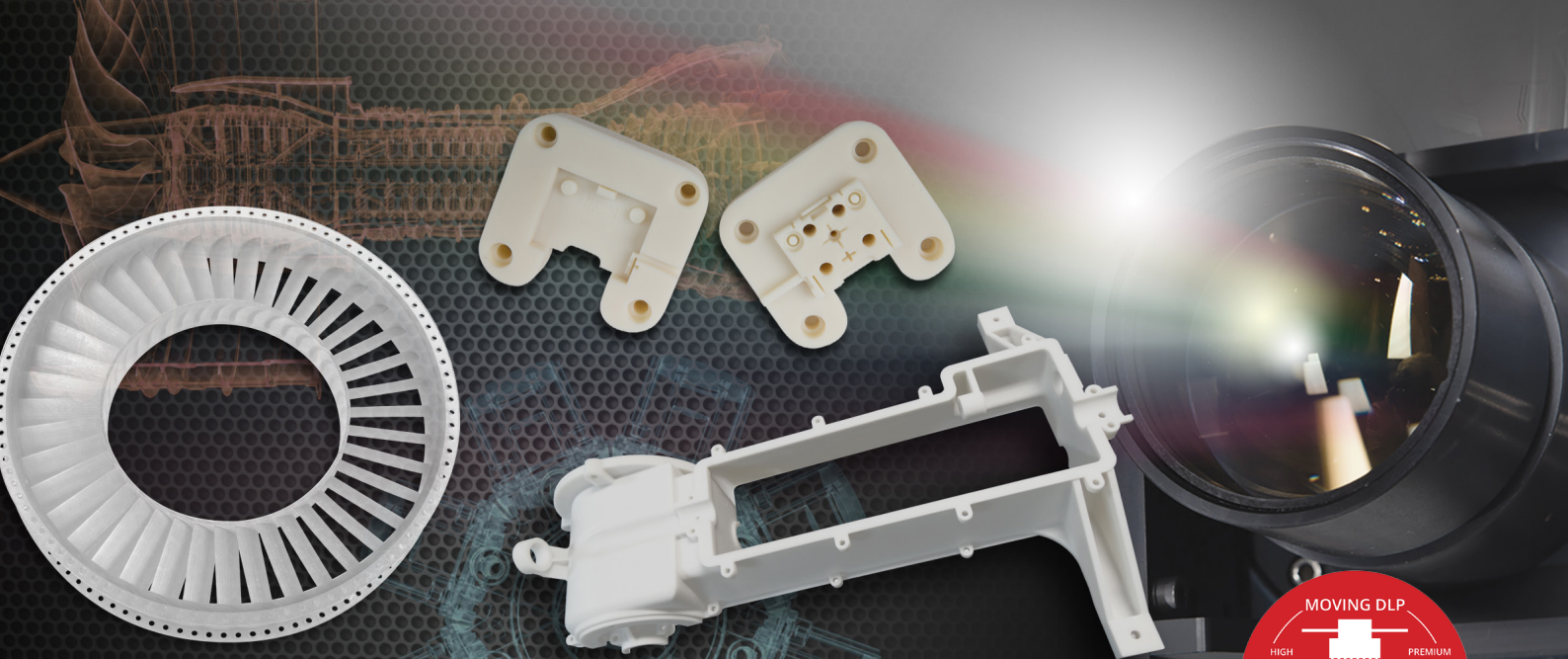
A UNIQUE SOLUTION FOR MANUFACTURING

Prodways developed MOVINGLight®, an exclusive technology based on photo-polymerization of liquid resin via moving DLP® heads, which makes it possible to 3D print parts with unequalled levels of precision and throughput over the entire build platform - up to ten times faster than market standards.

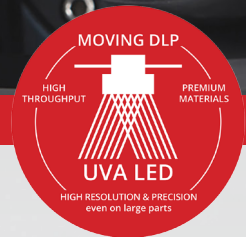
The ProMaker L6000 3D printer was designed to produce large, highly detailed parts, or large volumes of small parts at incredible speed on a build platform twice as large as the ProMaker L5000.

LOWEST OPERATING COST WITH NO COMPROMISE ON PERFORMANCE

Thanks to minimal wear-and-tear on machine parts, the ProMaker L6000 offers very low operating costs without compromising performance. Combined with high throughput, this results in very low cost-per-unit and improved profitability for industrial-level production in industries such as dental, medical, aerospace, investment casting, molding, and R&D centers.



MOVINGLight® TECHNOLOGY: UNPARALLELED SPEED AND PRECISION IN 3D PRINTING



- **Unmatched resolution:** 42 µm per pixel with dozens of millions of pixels per layer
- **High precision:** achieve incredibly fine detail over the entire build platform with no distortion
- **Unparalleled speed:** production up to 10X faster than market standards
- **High throughput:** achieve high production volumes without sacrificing quality
- **Superior surface quality:** minimal post-production finishing required
- **Lower operating cost:** minimal wear-and-tear on machine and less costly LED light source

ProMaker L6000 TECHNICAL SPECIFICATIONS

Max. build envelope capacity (LxWxH)	800 x 330 x 400 mm 31 x 13 x 16 inches
Number of DLP® heads	1
DLP® head resolution	1920 x 1080 pixels
Native pixel size (X, Y)	605 x 605 x 1016 DPI ~42 µm (0.0016 inches)
Layer thickness*	25 - 150 µm 0.001 to 0.006 inches
Build platform type	Perforated
VAT Volume	~192 L 51 US Gal
Printer size (LxWxH)	2285 x 1266 x 2230 mm 90 x 50 x 88 inches
Weight	1900 Kg 4180 lbs.
Power requirements	210-240 VAC, 8-12 A, 50-60 Hz
Workshop compatibility	Windows 7
Certification	CE

* Depending on material

By choosing one of our ProMaker machines, you're also accessing our vast technical knowledge and a wide range of available services to help optimize production and maximize profitability.
TRAINING • MAINTENANCE • HOTLINE AND ON-SITE ASSISTANCE • SPECIFIC DEVELOPMENT



ZI Les Garennes - 1-3, rue Chappe 78130 les Mureaux | Tel: +33 (0)1 30 90 44 12 | www.prodways.com

Photos: ©Prodways - ©Thinkstock - ©Shutterstock - V.09.10.2017
 ©Prodways 2017 - The information contained in this document is not contractually binding and may not be reproduced without prior approval.

