

SPEED & PRECISION FOR MANUFACTURING



PRODWAYS
TECHNOLOGIES

ProMaker **L5000**

WWW.PRODWAYS.COM

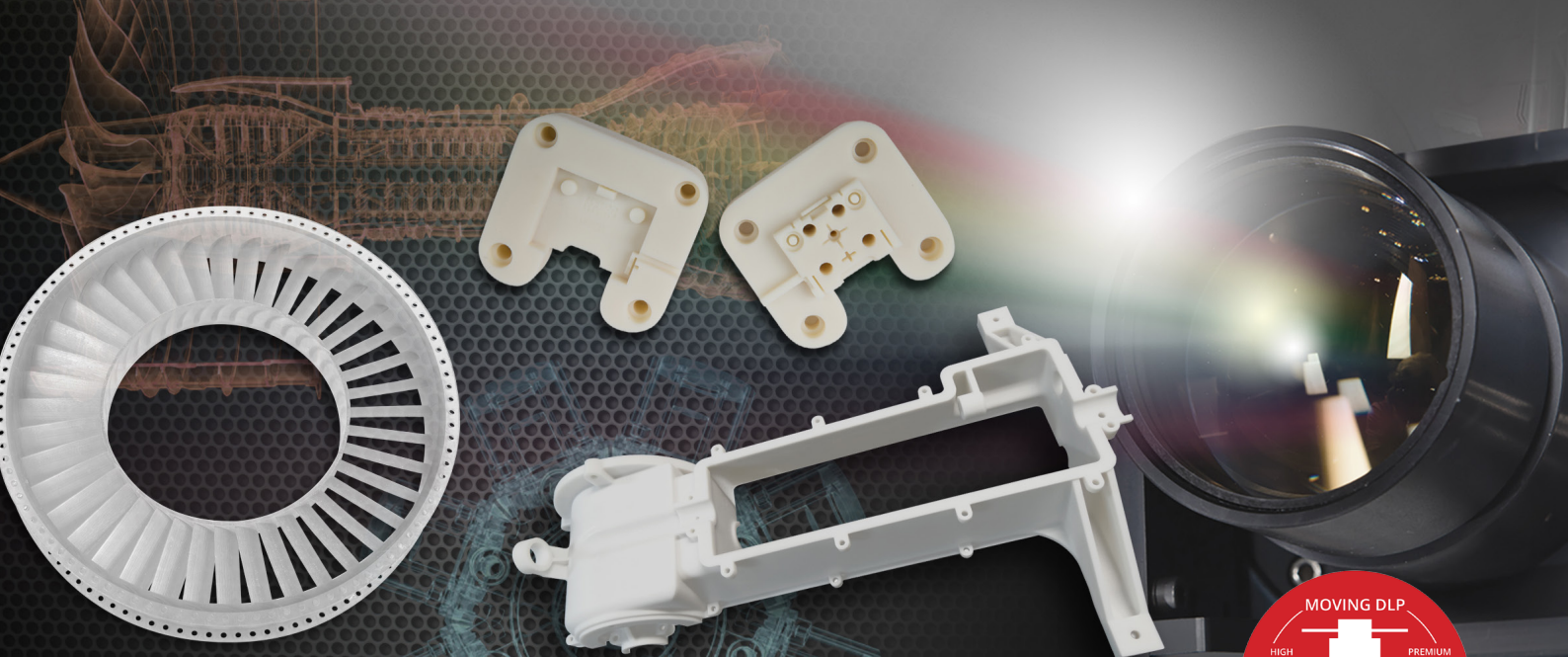
A UNIQUE SOLUTION FOR MANUFACTURING

Prodways developed MOVINGLight®, an exclusive technology based on photo-polymerization of liquid resin via moving DLP® heads, which makes it possible to 3D print parts with unequalled levels of precision and throughput over the entire build platform - up to ten times faster than market standards.

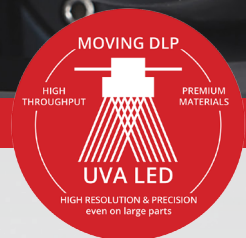
The ProMaker L5000 3D printer was designed to produce large, highly detailed parts, or large volumes of small parts at incredible speed.

LOWEST OPERATING COST WITH NO COMPROMISE ON PERFORMANCE

Thanks to minimal wear-and-tear on machine parts, the ProMaker L5000 offers very low operating costs without compromising performance. Combined with high throughput, this results in very low cost-per-unit and improved profitability for industrial-level production in industries such as dental, medical, aerospace, investment casting, molding, and R&D centers.



MOVINGLight® TECHNOLOGY: UNPARALLELED SPEED AND PRECISION IN 3D PRINTING



- **Unmatched resolution:** 42 µm per pixel with dozens of millions of pixels per layer
- **High precision:** achieve incredibly fine detail over the entire build platform with no distortion
- **Unparalleled speed:** production up to 10X faster than market standards
- **High throughput:** achieve high production volumes without sacrificing quality
- **Superior surface quality:** minimal post-production finishing required
- **Lower operating cost:** minimal wear-and-tear on machine and less costly LED light source

ProMaker L5000 TECHNICAL SPECIFICATIONS

Max. build envelope capacity (LxWxH)	400 x 330 x 400 mm 16 x 13 x 16 inches
Number of DLP® heads	1
DLP® head resolution	1920 x 1080 pixels
Native pixel size (X, Y)	605 x 605 x 1016 DPI ~42 µm (0.0016 inches)
Layer thickness*	25 - 150µm 0.001 to 0.006 inches
Build platform type	Perforated
VAT Volume	~115 L 30 US Gal
Printer size (LxWxH)	1815 x 1266 x 2230 mm 71 x 50 x 88 inches
Weight	1600 Kg 3520 lbs.
Power requirements	210-240 VAC, 8-12 A, 50-60 Hz
Workshop compatibility	Windows 7/8
Certification	CE

* Depending on material

By choosing one of our ProMaker machines, you're also accessing our vast technical knowledge and a wide range of available services to help optimize production and maximize profitability.
TRAINING • MAINTENANCE • HOTLINE AND ON-SITE ASSISTANCE • SPECIFIC DEVELOPMENT

PRODWAYS
THE NEW WAY OF PRODUCING

ZI Les Garennes - 1-3, rue Chappe 78130 les Mureaux | Tel: +33 (0)1 30 90 44 12 | www.prodways.com

Photos: ©Prodways - ©Thinkstock - ©Shutterstock - V.09.10.2017
 ©Prodways 2017 - The information contained in this document is not contractually binding and may not be reproduced without prior approval.

